

Intro



## AXIS AVIATION INSURANCE

Navigate risks using an important resource:  
our deep expertise.

From drones and flying clubs to large aircrafts and more, AXIS Aviation Insurance taps into years of experience to offer innovative solutions that help businesses mitigate aviation risks.



Scroll down  
to uncover flight facts and our solutions.



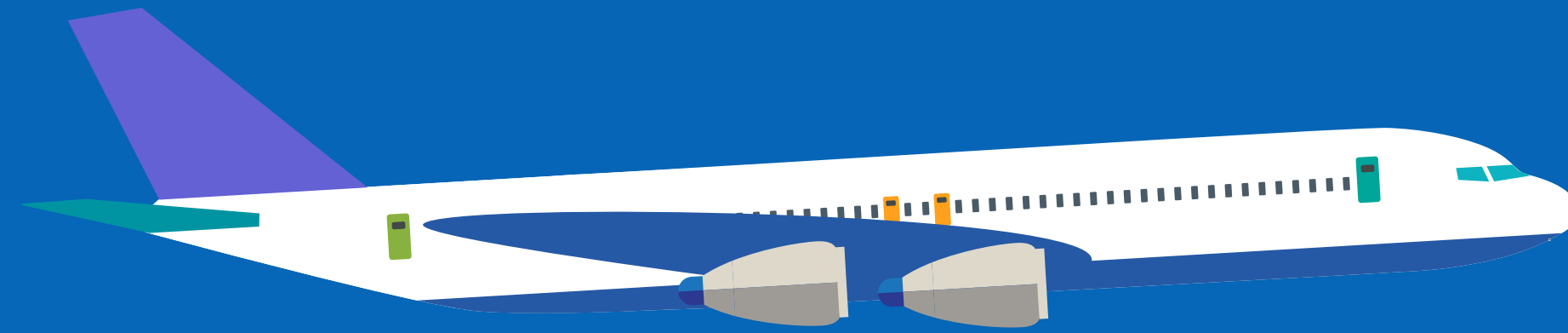
41,000 Feet

### Corporate aviation

By tapping into our deep expertise, AXIS tailors coverages corporate aviation companies can rely on.

- Hull
- Passenger liability
- Third-party liability
- Personal accident
- General liability
- Spare parts
- Loss of license

Business aviation contributes \$150 billion to U.S. economic output and employs more than 1.2 million people.<sup>1</sup>



**35,000** Feet

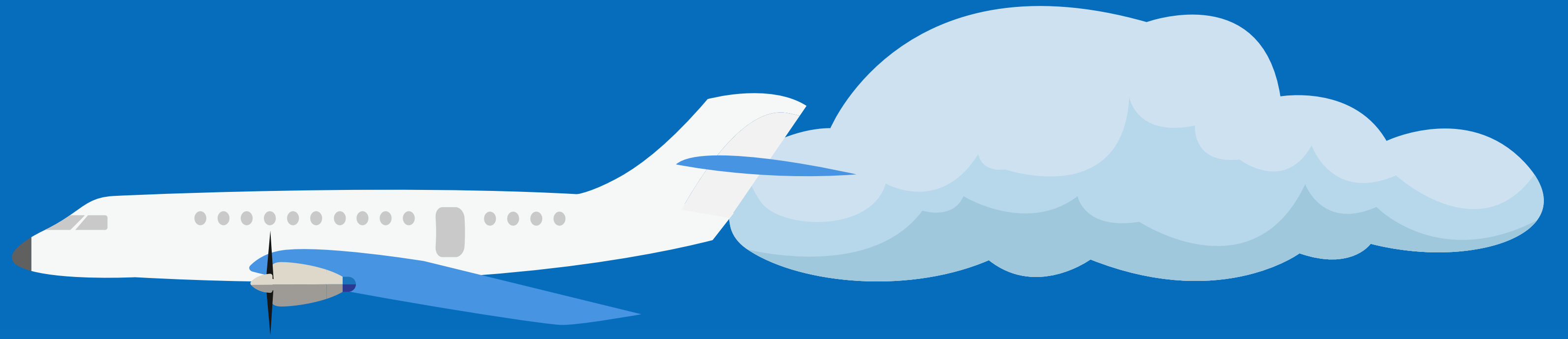
### Commercial aviation

Looking for a partner who can help navigate commercial aviation risk? AXIS can help.

- Hull
- Passenger liability
- Spare parts
- Loss of license
- General liability
- Cargo
- Third-party liability
- Personal accident

### **37 seconds**

an aircraft takes off or lands every 37 seconds at Chicago O'Hare's International Airport <sup>2</sup>

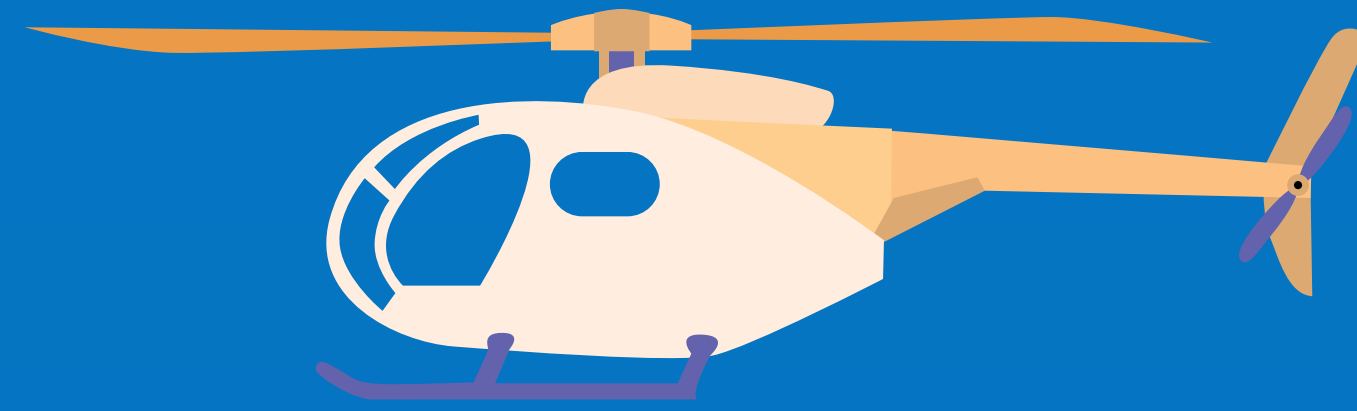


19,000 Feet

### Regional aviation

AXIS is able to provide regional aviation solutions.

- Hull
- Passenger liability
- Spare parts
- Loss of license
- General liability
- Cargo
- Third-party liability
- Personal accident



10,000 Feet

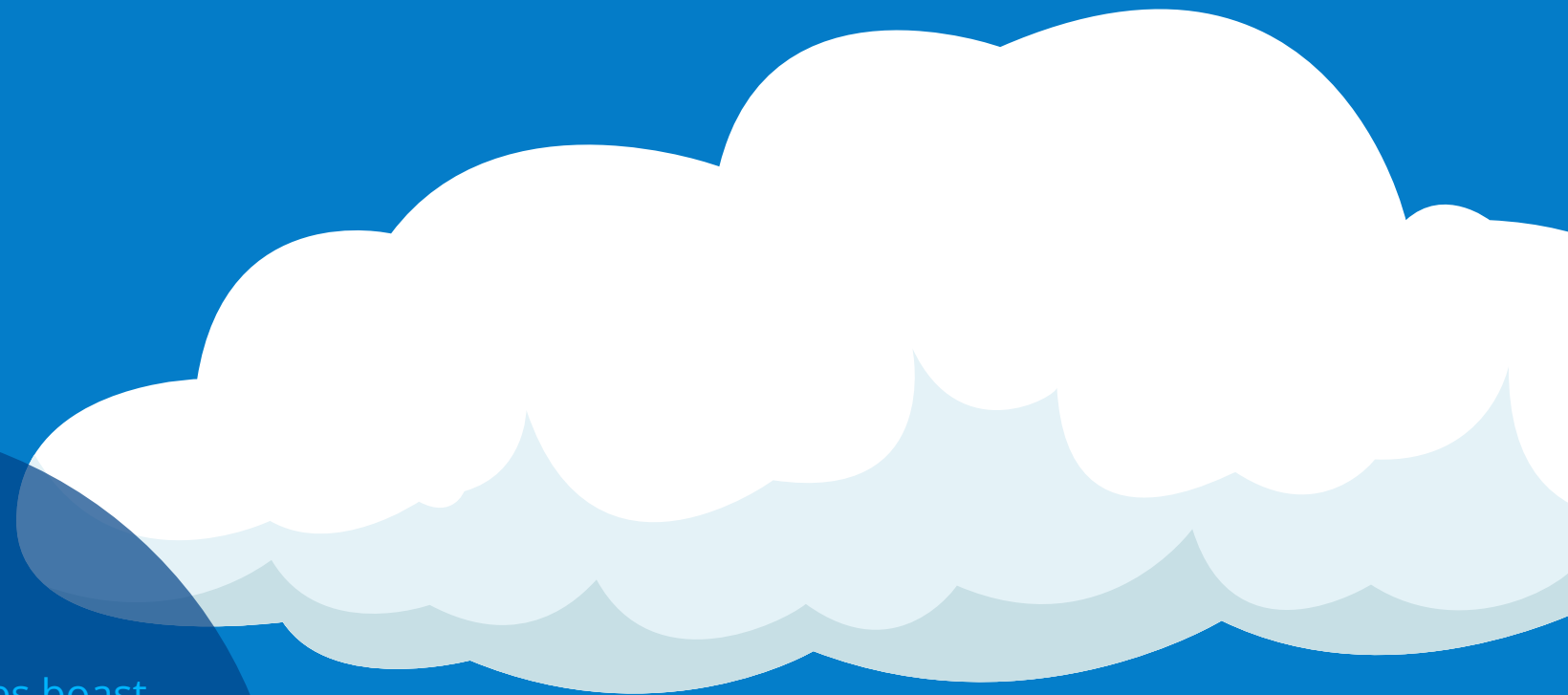
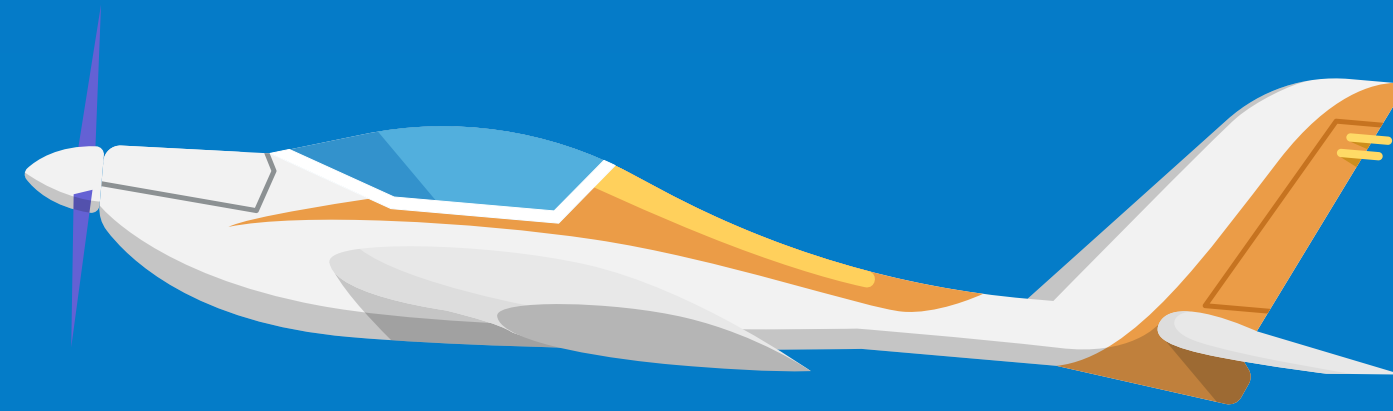
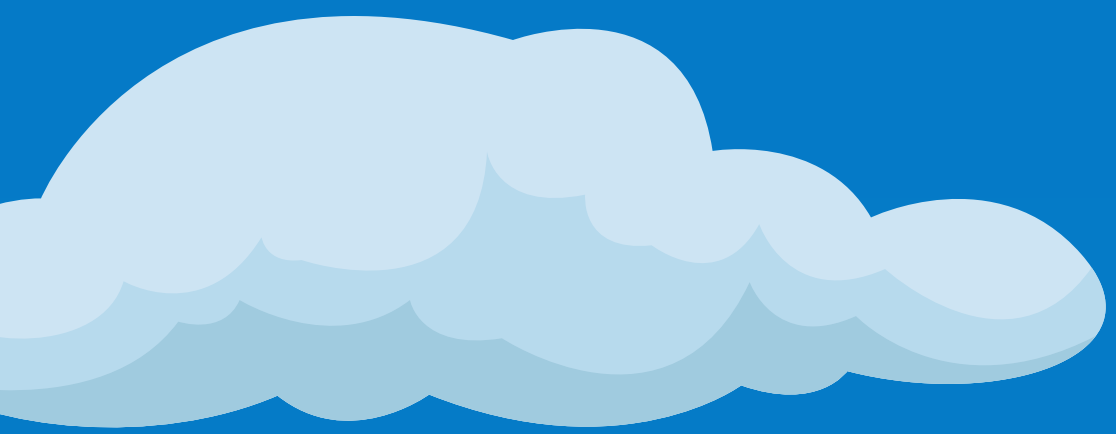
### Helicopter

Risk exposures in helicopter aviation pose their own unique challenges. AXIS can help ensure you have the right coverages.

- Hull
- Passenger liability
- Spare parts
- Personal accident
- General liability
- Cargo
- Third-party liability

Percent of global rotorcraft fleet operated

**U.S.: 35%**  
**Europe: 27%**<sup>5</sup>



**5,000** Feet

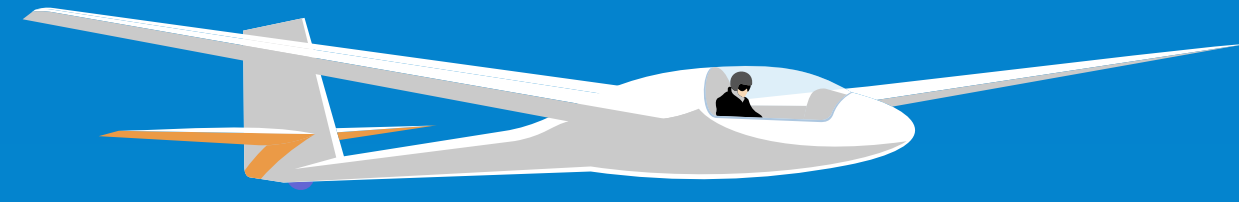
### Light aviation

AXIS helps clients prepare for, and be covered against, risks facing the light aviation industry.

- Hull
- Passenger liability
- Spare parts
- Personal accident
- General liability
- Cargo
- Third-party liability

Newer, sleeker, more cost-effective planes boast speeds up to

**200 MPH and 100 horsepower and pose new risks.<sup>4</sup>**

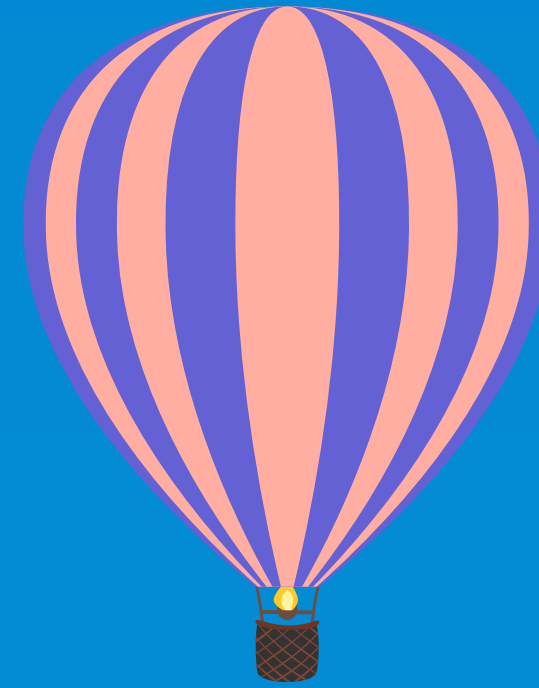


3,000 Feet

### Microlight & glider

The ultralight aircraft category poses its own unique risk challenges. The AXIS Aviation team offers experience and expertise in this market sector.

- Hull
- Passenger liability
- Third-party liability
- General liability
- Spare parts
- Personal accident



2,000 Feet



### Hot air balloon

AXIS helps your clients navigate the complex risks for this market.

- Passenger liability
- General liability
- Third-party liability
- Personal accident

Giant balloons have flown as high as 25,000 meters.<sup>6</sup>

**As balloons float higher, the liability risks rise, too.**





400 Feet

### Drones

AXIS offers coverage for commercially operated drones.

- Third-party liability
- General liability

The market growth for drones is forecasted to increase from \$14 Billion to \$43 Billion in 5 years.<sup>7</sup>

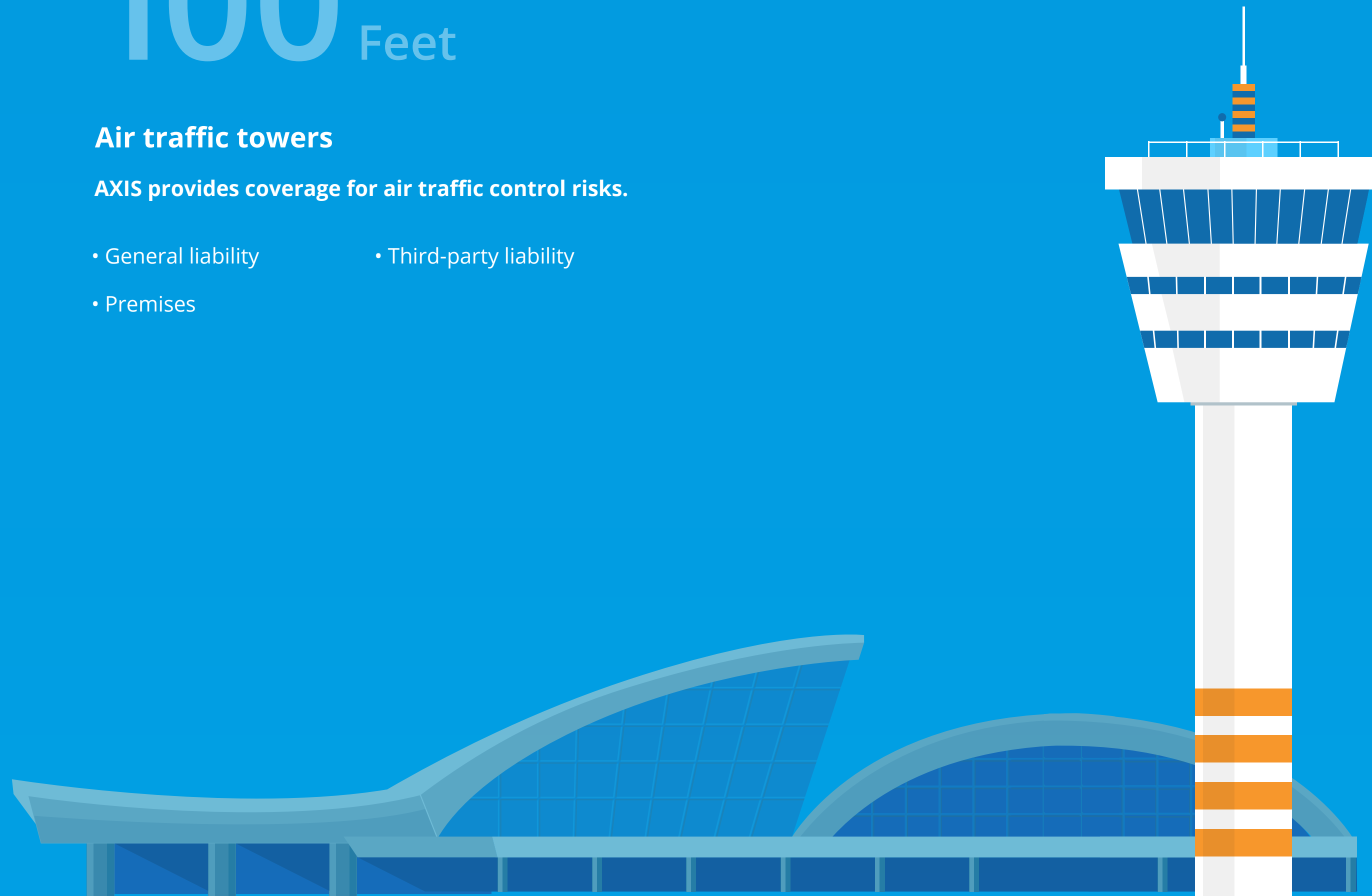
**More drones means  
more opportunities  
for risk.**

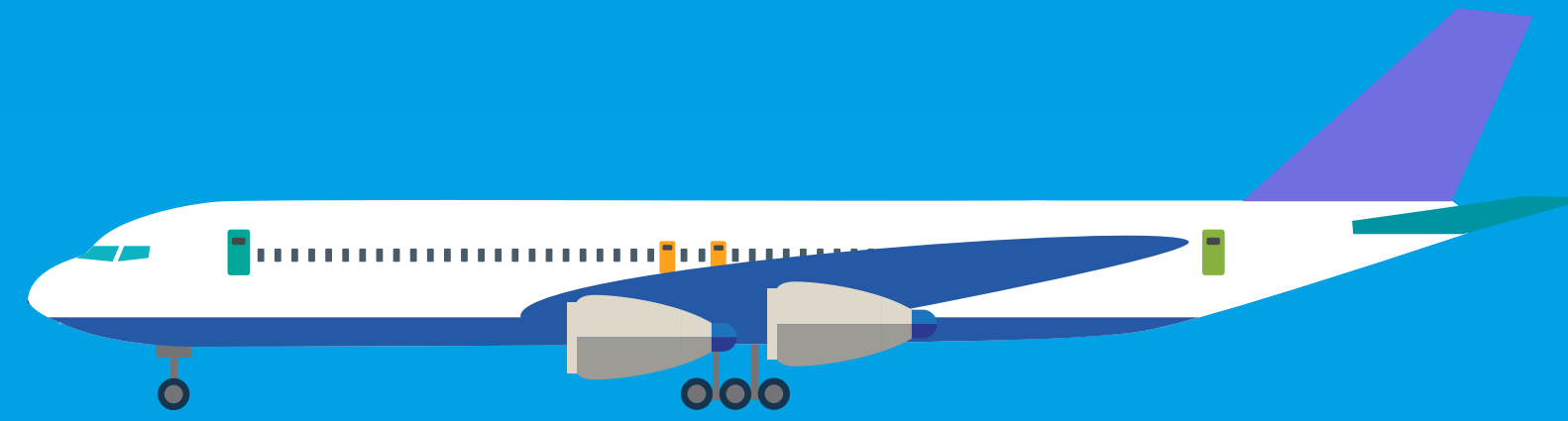
# 100 Feet

## Air traffic towers

AXIS provides coverage for air traffic control risks.

- General liability
- Third-party liability
- Premises





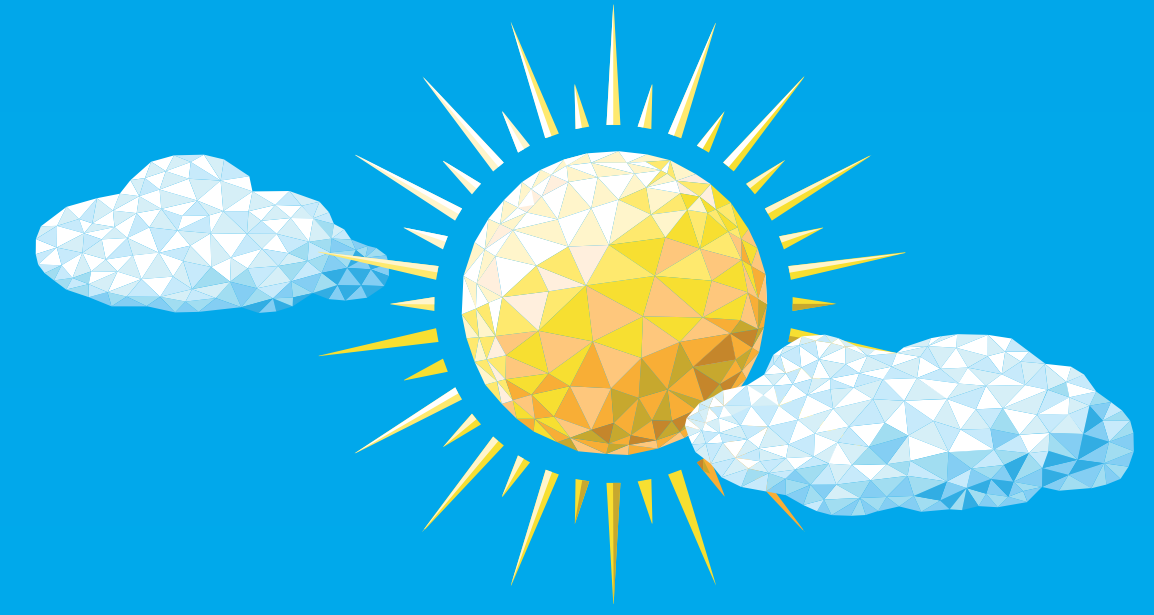
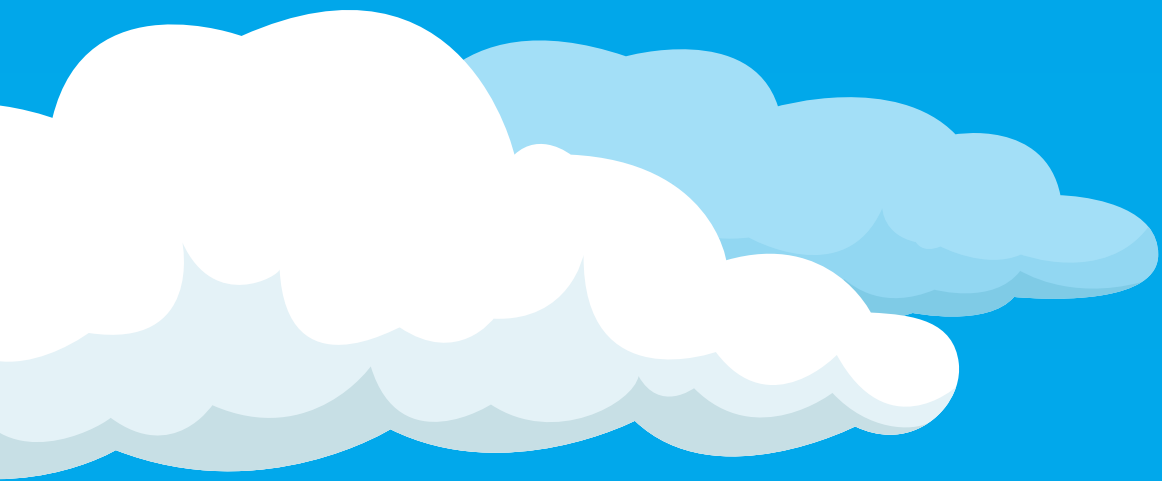
# Ground level

## Aviation and airport professionals

AXIS offers a range of covers for risks at ground level.

- General liability
- Premises
- Third-party liability
- Product
- Handling
- Cargo
- Personal accident
- Pilot training
- Pilot loss of license

Airports employ huge numbers of staff, creating a variety of **risks and liabilities** for the owners.<sup>9</sup>



# For aviation companies to soar, they need a company grounded in knowledge.

Our aviation experts have years of expertise enabling them to tailor coverage to help clients mitigate risks and protect their businesses.

## **AXIS Aviation Insurance capabilities include:**

**Up to 15% of hull war capacity**

**Up to 30% of excess war liability capacity**

**Up to \$100 Million in values of all risks capacity**